

PART NO: KM-DA-275-DF-16-S

TYPE: Type 3 surge arrester with RFI filter

DESCRIPTION: Protect low voltage power lines against the impact of surge voltage and RF disturbance. Locate as close as possible to the equipment to be protected.
Suitable for charging stations.

RATING: 230V AC nominal voltage



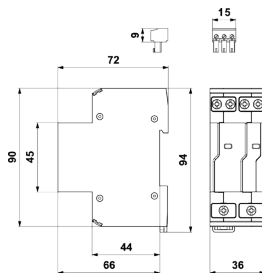
Standards

IEC 61643-11:2011 / T3, EN 61643-11:2012 (surge protection devices).

Electrical specification

Order number	KM-DA-275-DF-16-S	
System	TN-C / TN-C-S / TN-S / TT	
Nominal voltage	U_n	230V AC
Nominal voltage	U_o	230V/400V AC \pm 10%
Maximum operating voltage	U_c	275V AC
Nominal load current	I_L	16A
Nominal discharge current (8/20 μ s) L-N / N-PE	I_n	3kA
Nominal discharge current (8/20 μ s) L+N-PE	I_n	5kA
Test voltage L-N / N-PE	U_{oc}	6kV
Test voltage L+N-PE	U_{oc}	10kV
Voltage protection level mode L-N	U_p	1.2kV
Voltage protection level mode N-PE/L-PE	U_p	1.5kV
Short-circuit current rating	I_{sCCR}	6kA
Maximum overcurrent protection		16A gL/gG or C 16A
Response time L-N	t_a	25ns
Response time N-PE	t_a	100ns
Filter attenuation at 1MHz (50 Ω /50 Ω) unsymmetrical		30dB
Cross-section of connected conductors solid/stranded (max)		6mm ²
Fault indication		Red indication field
Remote indication		Potential-free change-over contact
Remote indication contacts		250V/0.5A AC, 250V/0.1A DC
Cross-section of remote indication conductors solid/stranded (max)		1.5mm ²
Degree of protection		IP20
Range of operating temperatures (min - max)		-40°C - +80°C
Mounting		DIN rail 35mm
According to standard		EN 61643-11:2012, IEC 61643-11:2011 / T3
Weight		175g (nett), 205g (gross)

Dimensions:



Wiring diagram:

