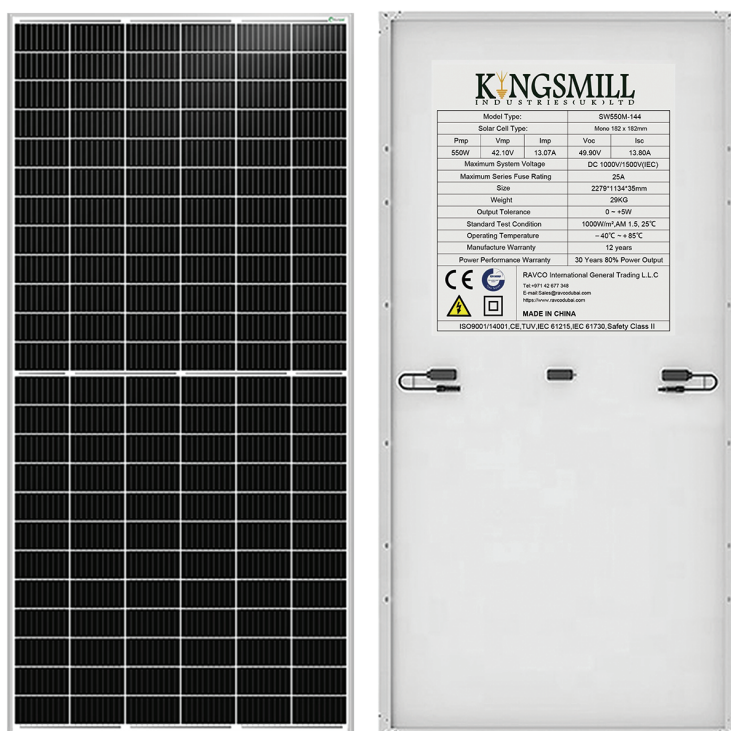


Introduction

550W Photovoltaic Solar Panels are certified for the most challenging environmental conditions. This 550W Photovoltaic high-power monocrystalline solar panel operates at 21.30% efficiency to maximize the light absorption area.

Product Options



Mono Solar Panel Features



Widely using of the most popular and mature type of modules for solar system



High power output and highest conversion efficiency of 21.30%



Anti-reflective and anti-soiling surface reduces power loss from dirt and dust



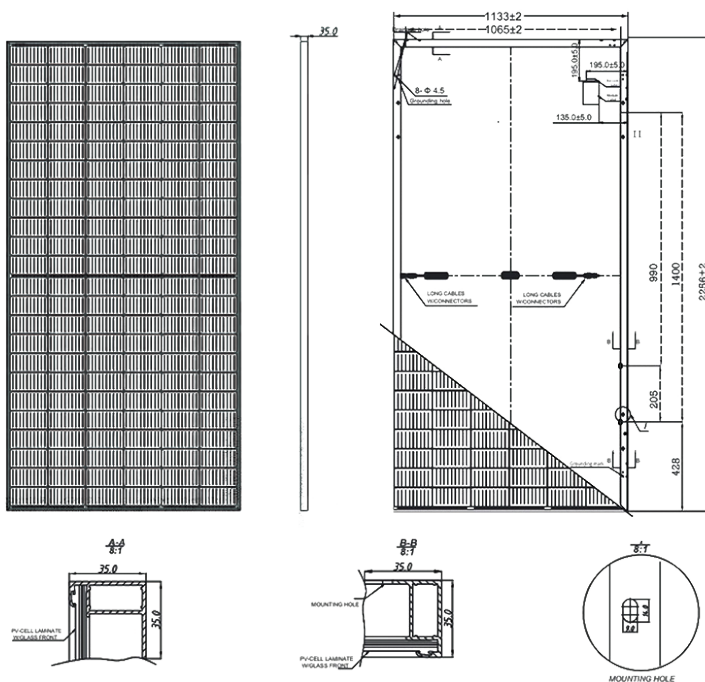
Outstanding Performance in low-light irradiance environments



Excellent mechanical load resistance:
Certified to withstand high wind loads
(2400Pa) and Snow loads (5400Pa)



Positive power tolerance: 0~+5W



Electrical Characteristics(STC)

Module Type	KMSW550M-144
Maximum Power (Pmax)	550W
Maximum Power Voltage (Vmp)	42.10V
Maximum Power Current (Imp)	13.07A
Open-circuit Voltage (Voc)	49.90V
Short-circuit Current (Isc)	13.80A
Module Efficiency (%)	21.30%
Power Tolerance	0~+5W
Temperature Coefficient of Isc	+0.043%/℃
Temperature Coefficient of Voc	-0.26%/℃
Temperature Coefficient of Pmax	-0.36%/℃

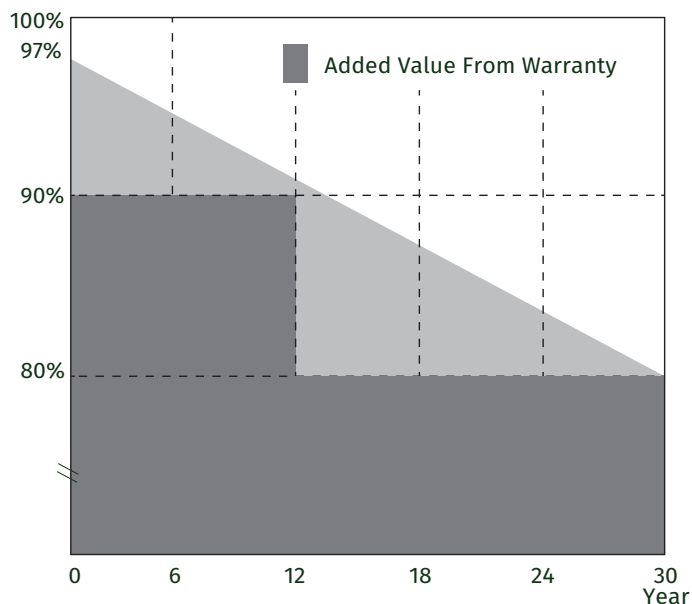
Product Features

Warranty

12 years for product defects in materials & workmanship
12 years for 90% of warranted minimum power output
30 years for 80% of warranted minimum power output
30 years liner warranty

Reliable Quality

Positive power tolerance: 0~+5W
100% EL Double-inspection ensures modules are defects free
Modules Binned by Current to improve system performance
Potential induced Degradation (PID) Resistant



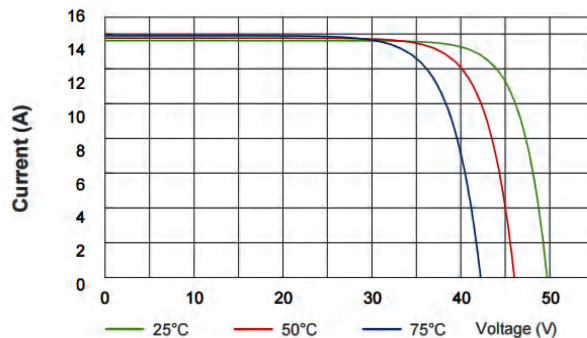
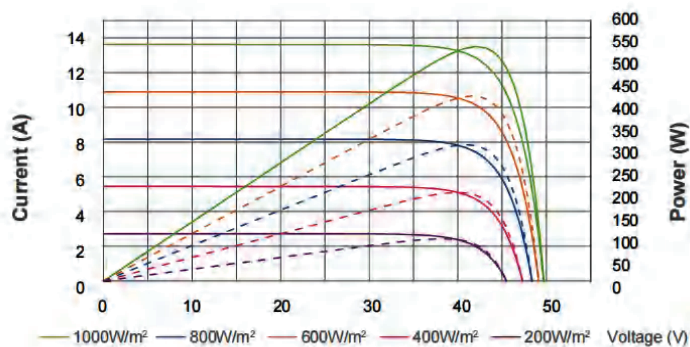
Mechanical Parameters

Cell(mm)	Mono 182*182mm
Weight(kg)	29kg
Glass Thickness	3.2mm,AR Coating Tempered Glass
Dimensions (L*W*H)(mm)	2279*1134*35mm
Cable Cross Section Size (mm ²)	4
Cable Cross Section Length (mm)	300
No.of Cells and Connections	144(6*24)
Junction Box	IP67
Connector	MC4 Compatible

Working Conditions

Maximum System Voltage	DC 1000V/1500V(IEC)
Operating Temperature	-40°C~ +85°C
Maximum Series Fuse	25A
Maximum Static Load,Front (e.g.,snow and wind)	5400Pa (112 lb/ft ²)
Maximum Static Load,Back (e.g.,wind)	2400Pa (50 lb/ft ²)
NOCT	45±2°C
Positive power tolerance	0~ +5W
Application Class	Class A

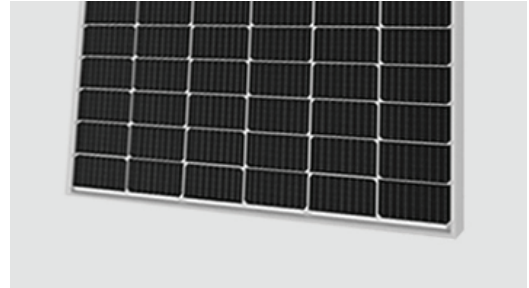
I-V Curve



Product Features

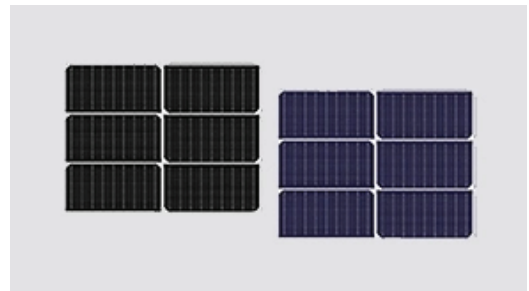
GLASS

- Antireflective glass
- Self-cleaning function
- Module efficiency is increased by 2%
- Service life as long as 25 years (30 years optional)
- Translucency of normal luminance is increased by 2%



SOLAR CELL

- Uniform color
- High PID resistant
- Low breakage rate
- High stunt-resistance
- High model efficiency up to 20%



FRAME

- Conventinal frame
- Seal-lip design glue injection
- Serrated-clip design tensile strength
- Boost bearing capability and prolong service life



JUNCTION BOX

- Heat dissipation
- Long service life
- >IP67 protection level
- Innovative Full-Glue-Filled
- Waterproofness Junction Box



More Information

All with A Grade for on-grid & off-grid use for residential and public rooftop and ground mounting
Solar panels are a clean source of energy that use the sun's rays to convert them into electricity or heat.

Our clean energy solutions provide electrical power as a way to decarbonize
and transition to clean energy in our mission to combat climate change.