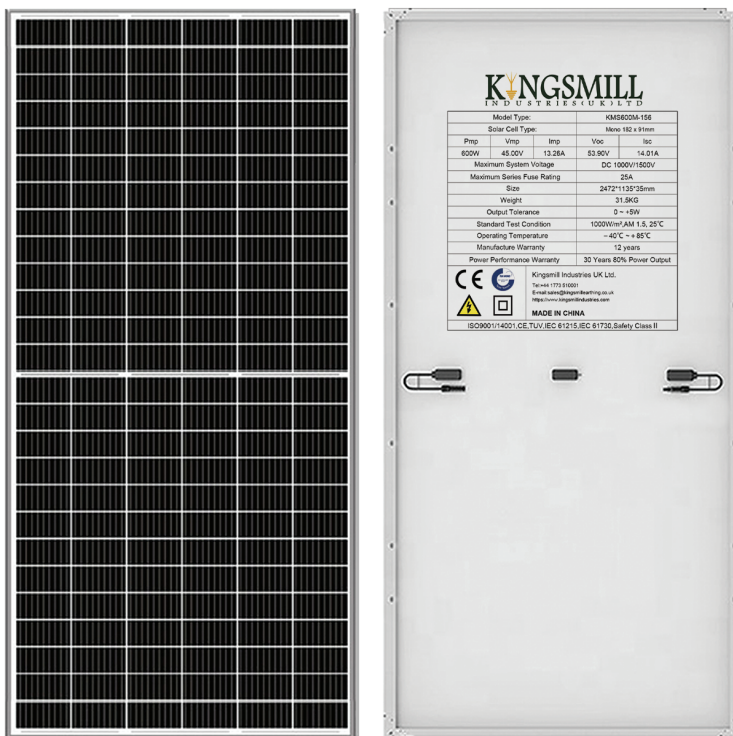








## Introduction

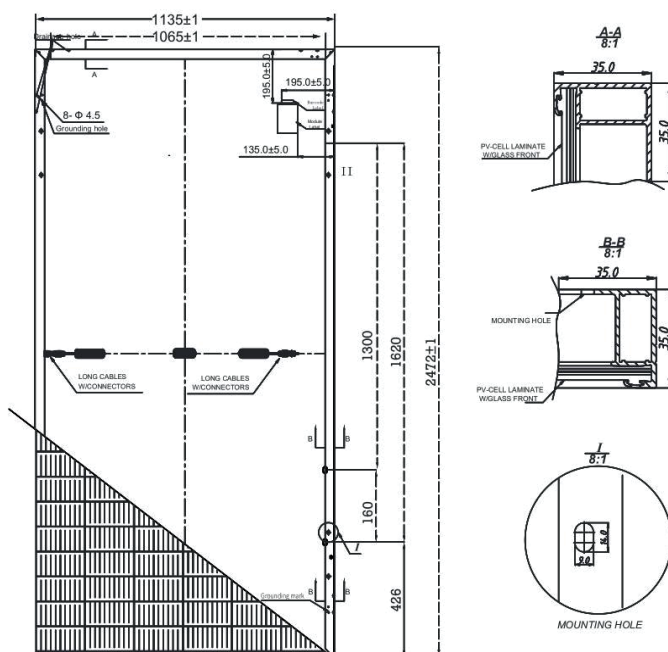
600W Photovoltaic Solar Panels are certified for the most challenging environmental conditions. This 600W Photovoltaic high-power monocrystalline solar panel operates at 21.20% efficiency to maximize the light absorption area.

## Product Options



### Mono Solar Panel Features

-  Widely using of the most popular and mature type of modules for solar system
-  High power output and highest conversion efficiency of 21.20%
-  Anti-reflective and anti-soiling surface reduces power loss from dirt and dust
-  Outstanding Performance in low-light irradiance environments
-  Excellent mechanical load resistance: Certified to withstand high wind loads (2400Pa) and Snow loads (5400Pa)
-  Positive power tolerance: 0~+5W



### Electrical Characteristics(STC)

Module Type	KMS600M-156
Maximum Power (Pmax)	600W
Maximum Power Voltage (Vmp)	45.00V
Maximum Power Current (Imp)	13.26A
Open-circuit Voltage (Voc)	53.90V
Short-circuit Current (Isc)	14.01A
Module Efficiency (%)	21.20%
Power Tolerance	0~+5W
Temperature Coefficient of Isc	+0.05%/°C
Temperature Coefficient of Voc	-0.29%/°C
Temperature Coefficient of Pmax	-0.37%/°C

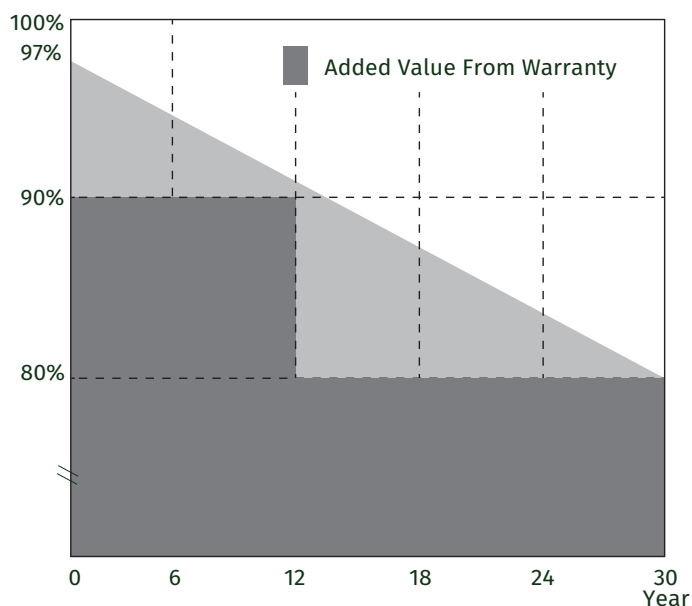
## Product Features

## Warranty

12 years for product defects in materials & workmanship
12 years for 90% of warranted minimum power output
25 years for 80% of warranted minimum power output
25 years liner warranty

## Reliable Quality

Positive power tolerance: 0~+5W
100% EL Double-inspection ensures modules are defects free
Modules Binned by Current to improve system performance
Potential induced Degradation (PID) Resistant



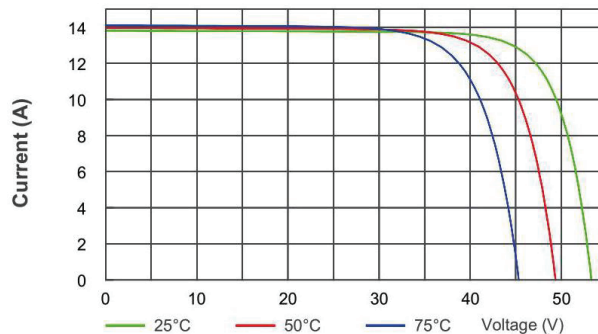
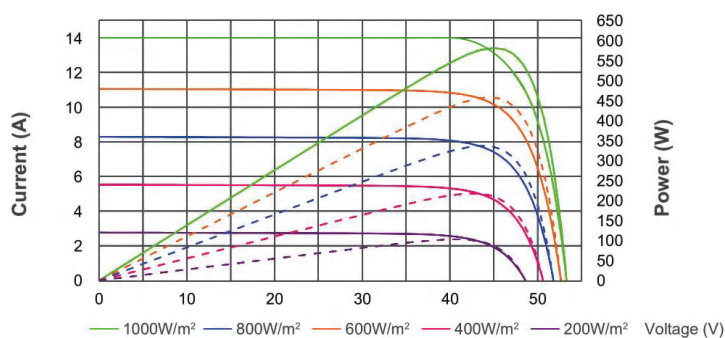
## Mechanical Parameters

Cell(mm)	10BB Mono 182*91
Weight(kg)	31.5kg
Glass Thickness	3.2mm (0.13inches), Tempered AR Glass
Dimensions (L*W*H)(mm)	2472*1135*35mm
Cable Cross Section Size (mm <sup>2</sup> )	4
Cable Cross Section Length (mm)	300
No.of Cells and Connections	156(6*26)
Junction Box	IP68,with Bypass Diodes
Connector	MC4 Compatible

## Working Conditions

Maximum System Voltage	DC 1000V/1500V
Operating Temperature	-40°C~ +85°C
Maximum Series Fuse	25A
Maximum Static Load,Front (e.g.,snow and wind)	5400Pa (112 lb/ft <sup>2</sup> )
Maximum Static Load,Back (e.g.,wind)	2400Pa (50 lb/ft <sup>2</sup> )
NOCT	44±2°C
Positive power tolerance	0~ +5W
Application Class	Class A

## I-V Curve

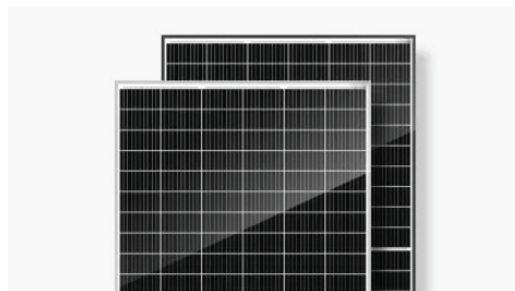


### Product Features

---

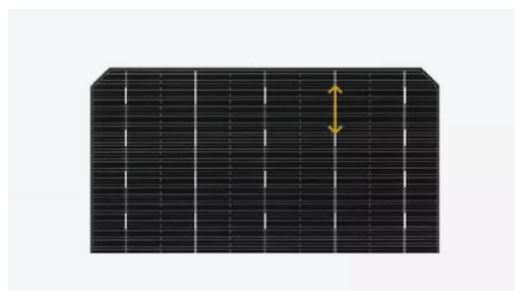
#### MULTI BUSBAR TECHNOLOGY

- Improves efficiency of modules
- Offers better appearance



#### HALF CUT TECHNOLOGY

- Under the same shadow condition
- Lower power loss than full cell



#### FRAME

- Conventional frame
- Boost bearing capability
- Prolong service life
- Serrated-clip design tensile strength



#### SPLIT JUNCTION BOX

- Reduced internal power loss
- Ensures model running safety



### More Information

---

All with A Grade for on-grid & off-grid use for residential and public rooftop and ground mounting  
Solar panels are a clean source of energy that use the sun's rays to convert them into electricity or heat.

Our clean energy solutions provide electrical power as a way to decarbonize  
and transition to clean energy in our mission to combat climate change.